

Moff

[モフ]

ポリエステル100% / 145cm **耐摩耗** **ウォッシュアブル**

SINCOL OSAKA

C-rank

「クリンピット」と呼ばれる素材が生地の中に空気を含むことでソフトな手触りを実現。耐久性があり、使用頻度の高い場所でも安心してお使いいただけます。



K-01



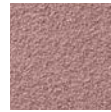
K-02



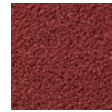
K-04



K-06



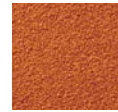
K-10



K-12



K-14



K-15



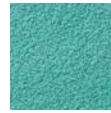
K-17



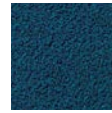
K-19



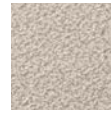
K-20



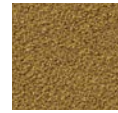
K-22



K-25



K-29



K-30



K-31

Quel

[クエル]

ポリエステル84%・アクリル16% / 137cm

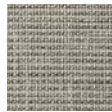
SUNTONE

C-rank

複数のモール糸を使用し、ざっくりとした立体感とボリューム感で家具に+αの表情を演出する。



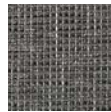
1



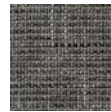
2



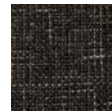
3



4



5



6

Declare II

[デクレアII]

ポリエステル100% / 140cm

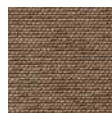
SINCOL

C-rank

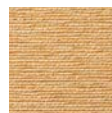
独特な織りでソフトな風合いに仕上がっていて、プレーンだが表情があり人気の高い生地。



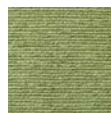
T-9272



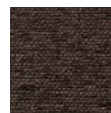
T-9273



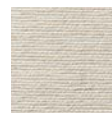
T-9274



T-9275



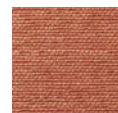
T-9276



T-9277



T-9278



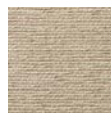
T-9279



T-9280



T-9281



T-9282



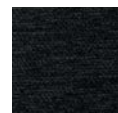
T-9283



T-9284



T-9285



T-9286